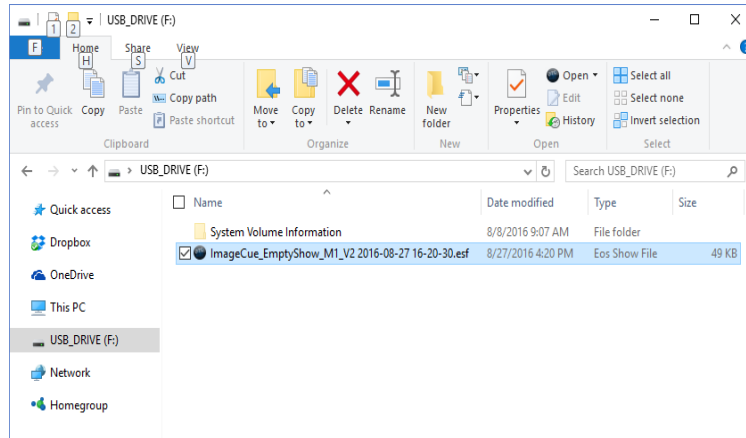
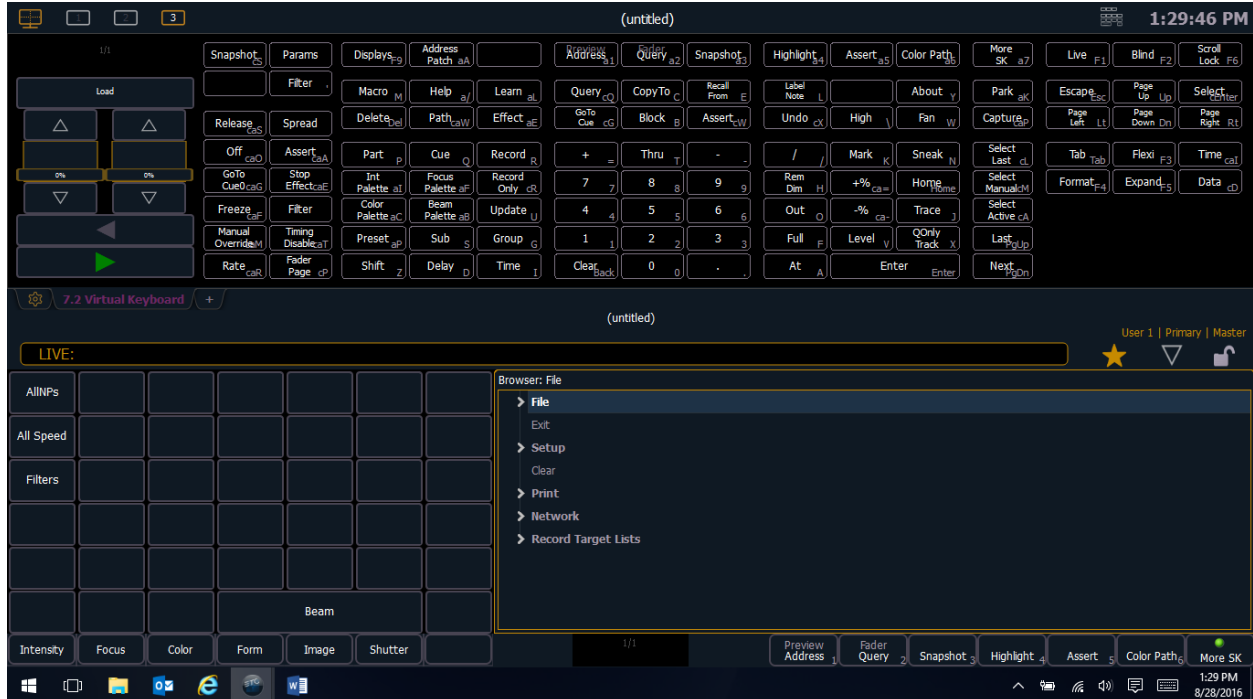


Adding the ImageCue fixture profile to ETC EOS Consoles/Nomad

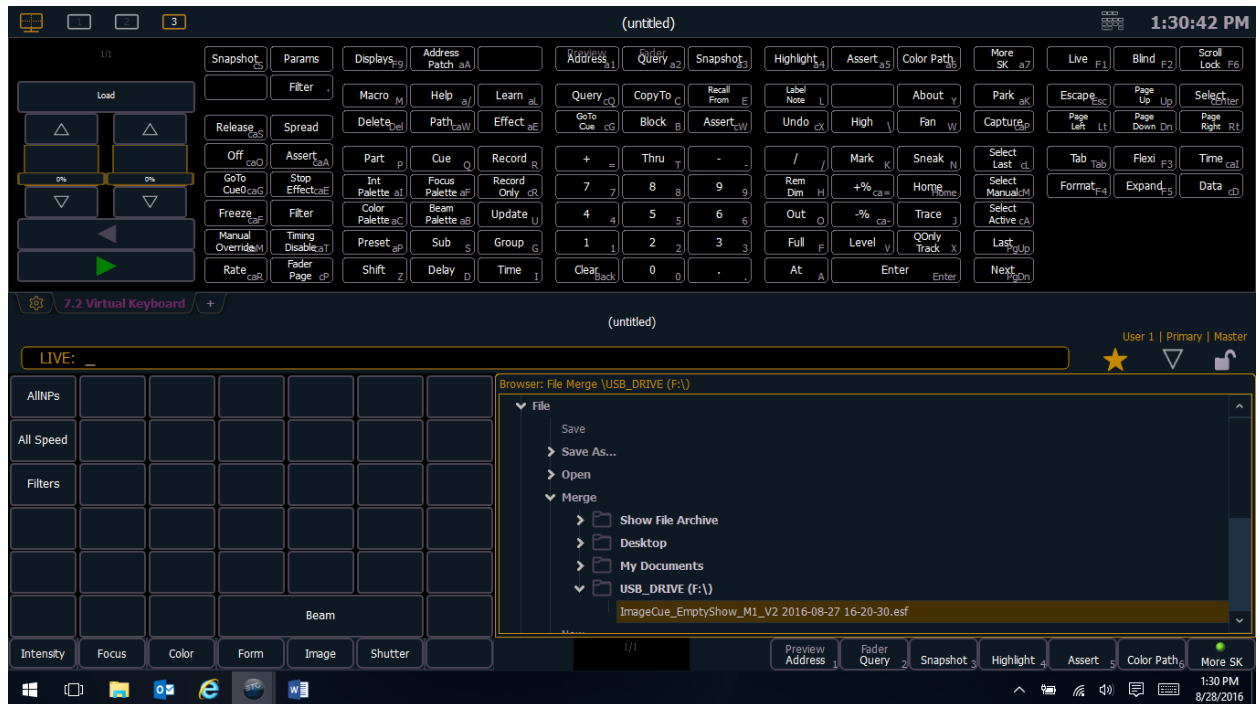
1. Download the empty show zip file with the fixture profile from the ImageCue website.
2. Unzip the show file to a USB Flash Drive (or a location on your computer for Nomad).



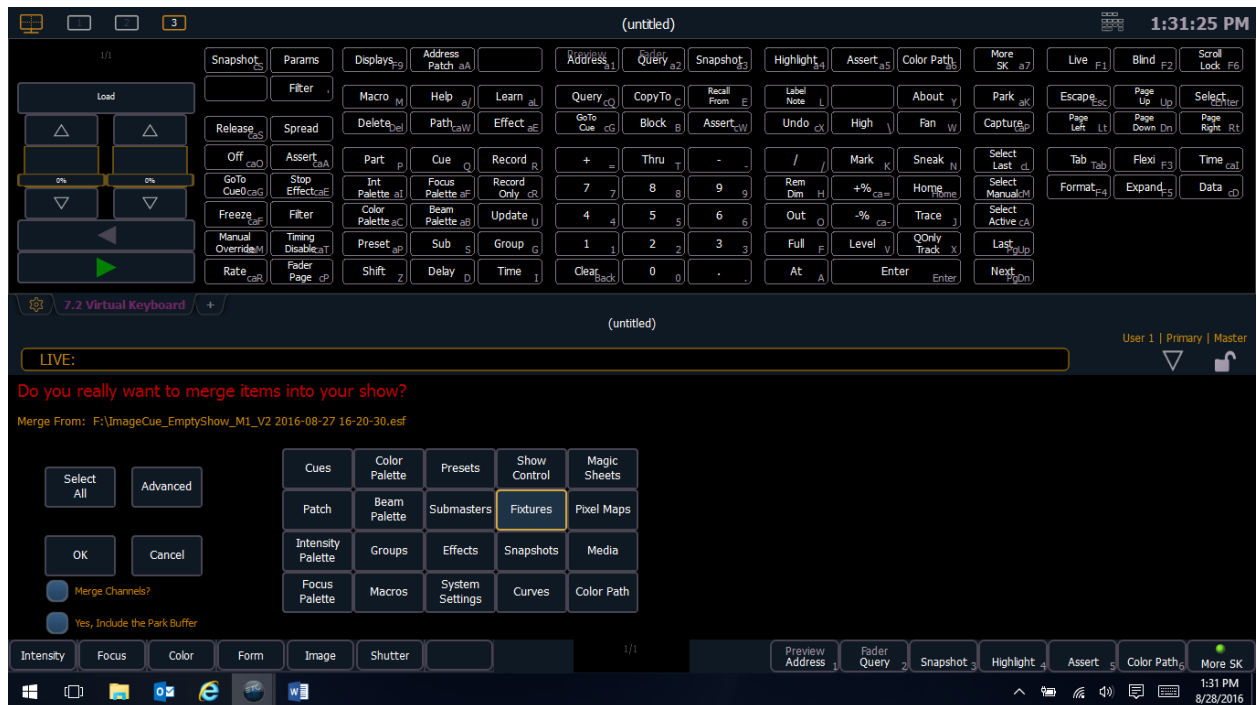
3. Insert the USB Drive into the console. Start the console or Nomad. You can add the profile to an existing show, or start with a new show. The screen shots shown are for a new show. In “LIVE” mode, open the Browser.



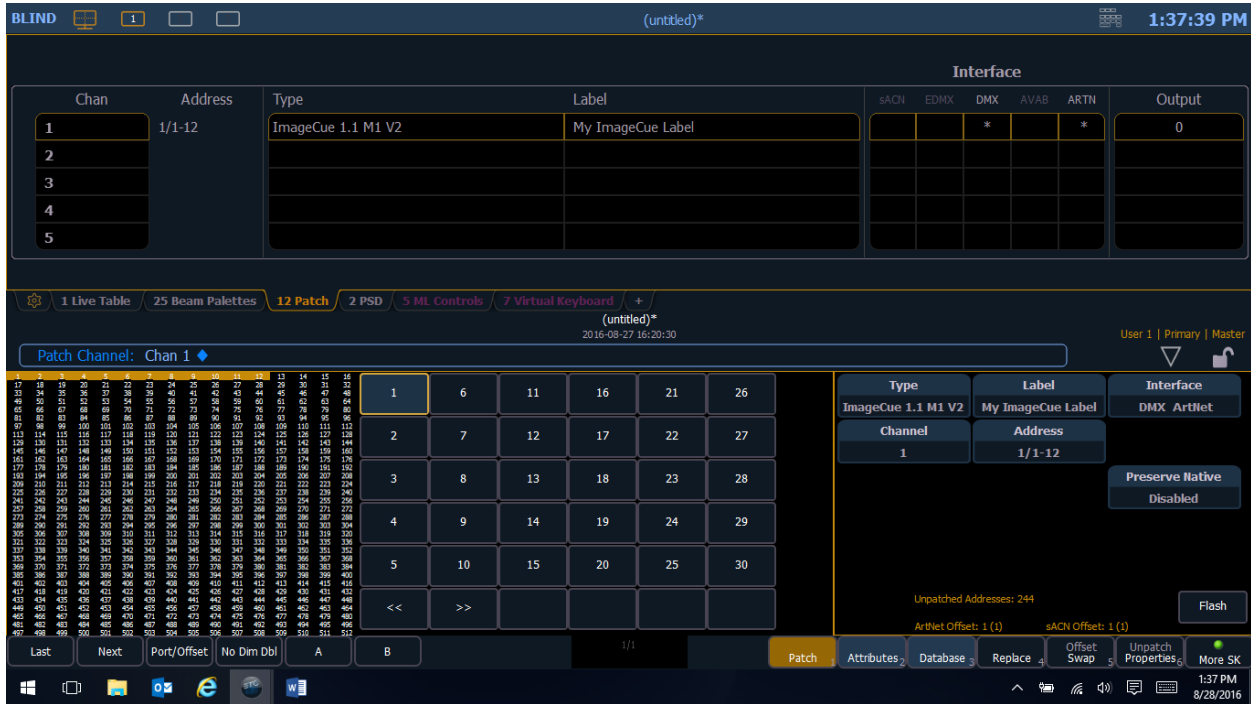
4. Navigate to FILE / MERGE / USB Drive or File Location / ImageCue_EmptyShow File. Double-click on the file.



5. Select the "Fixtures" filter to merge only the ImageCue fixture profile. Merging without this filter could change some system settings in your show! Then click on OK.



- Next, patch the fixture as per normal. In the example the ImageCue is patched as Channel 1 with a starting address of 1 in DMX Universe 1.



- Once the fixture is patched, select it (Channel 1 in the example). The ML Controls (moving light) screen will provide access to all of the parameters at one time:

